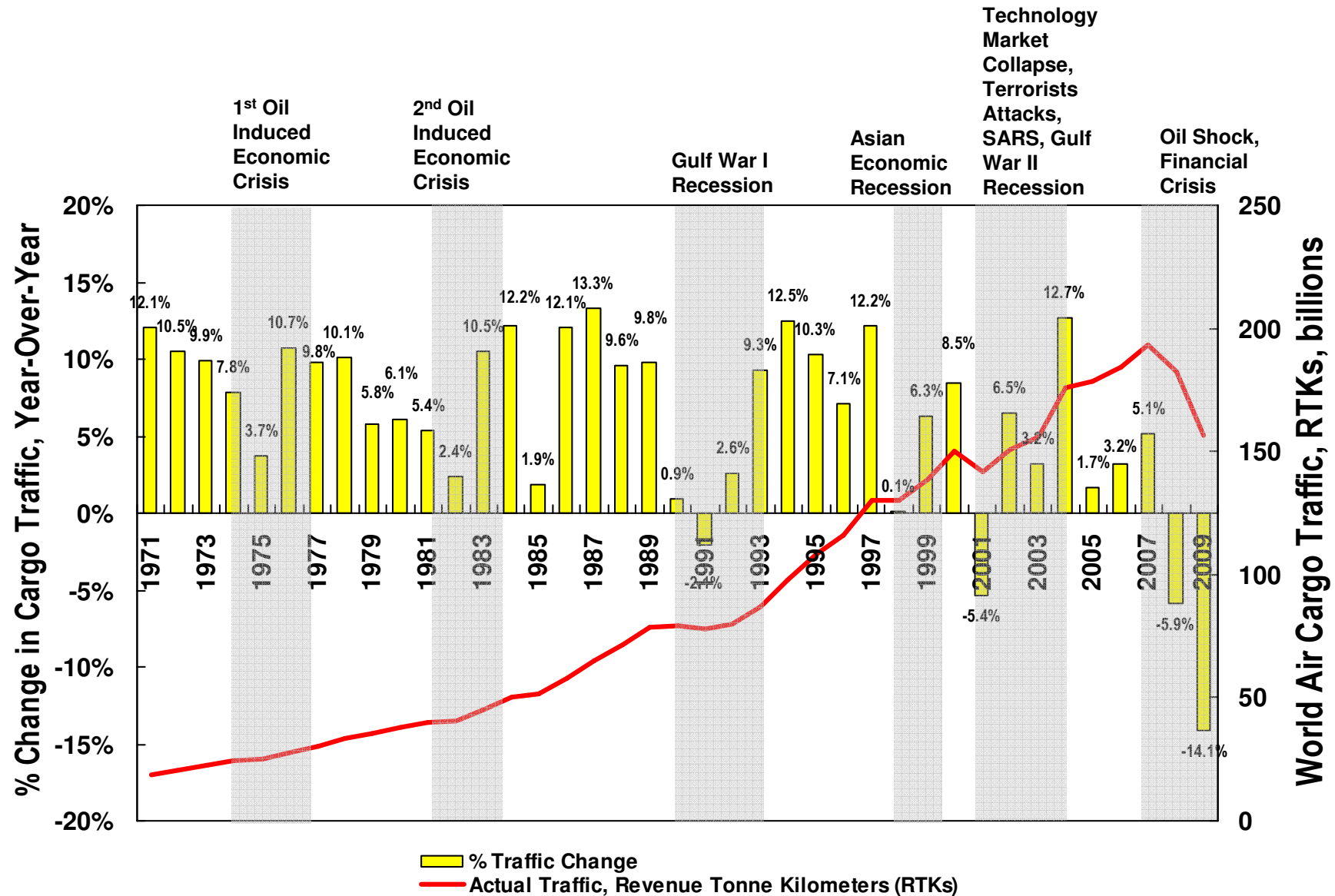
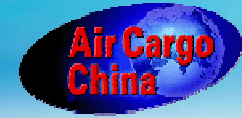


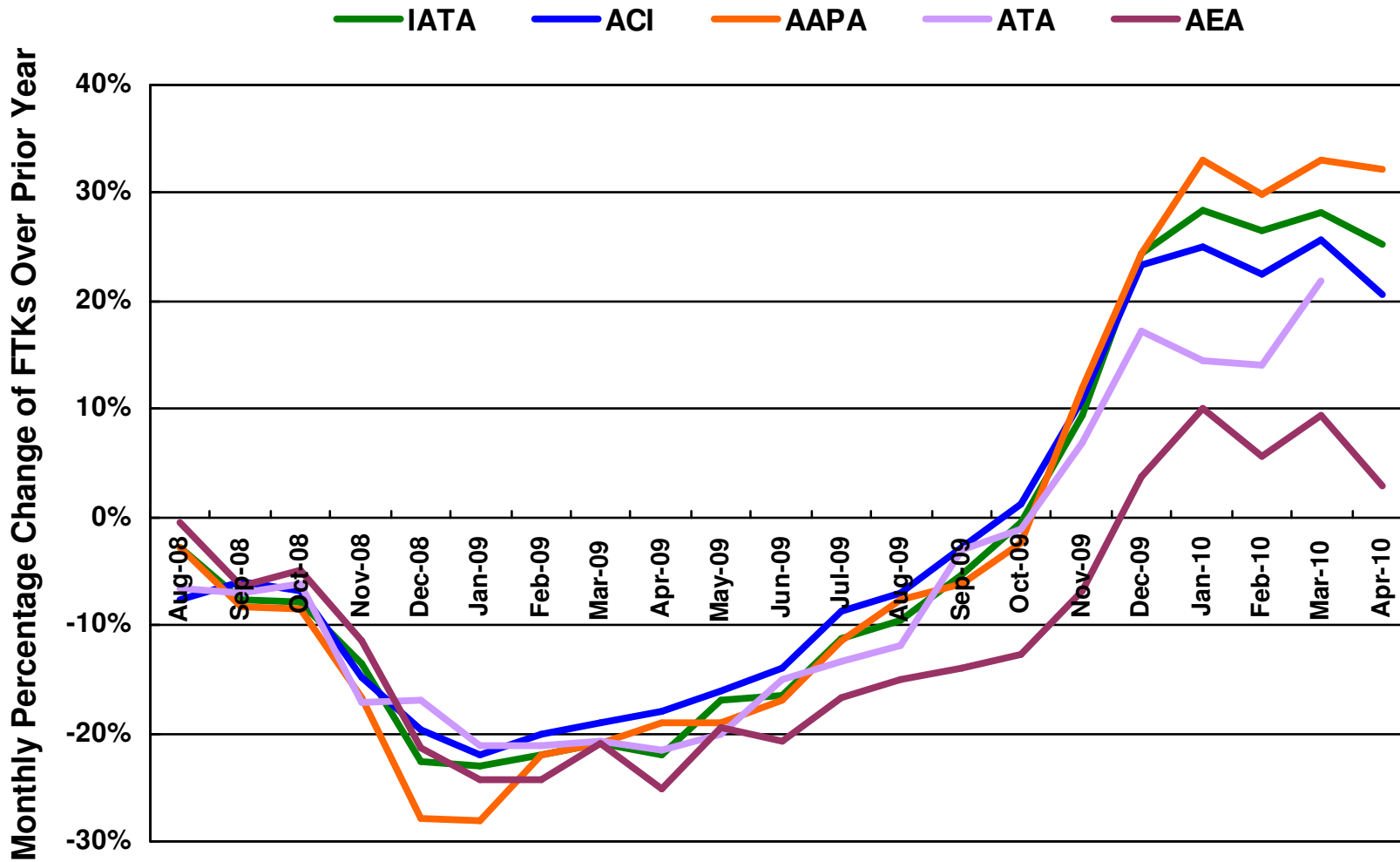
China's Logistics Boost – Airports and Hubs on the Upswing

Tom Hoang
Regional Director, Cargo Marketing
Boeing Commercial Airplanes
9 June 2010
Shanghai, China

The decline in world air cargo traffic in 2008 and 2009 resulted in 6 years of lost growth



Air cargo traffic trend consistency from trade associations

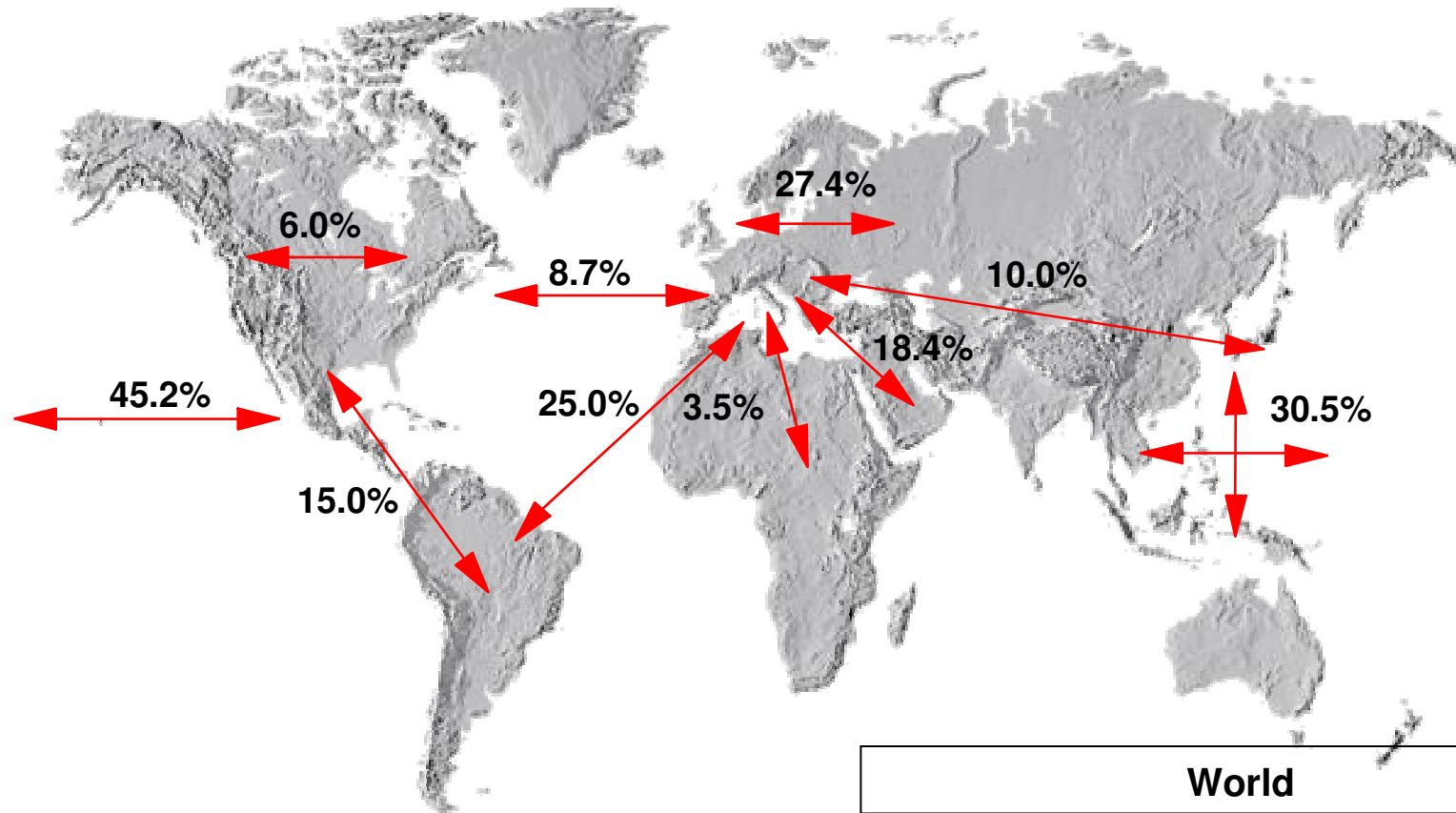


Sources: IATA, ACI, AAPA, ATA, and AEA

World air cargo grew 22.6% for Jan-Mar 2010 relative to traffic levels for Jan-Mar 2009



Year To Date Air Cargo Growth by Regional Market



YTD Year-Over Comparison

World
Jan - Mar 2010 vs. Jan - Mar 2009: 22.6%

Sources: U.S. Department of Commerce, AAPA, AEA, ATA, and the Boeing World Cargo Forecast.

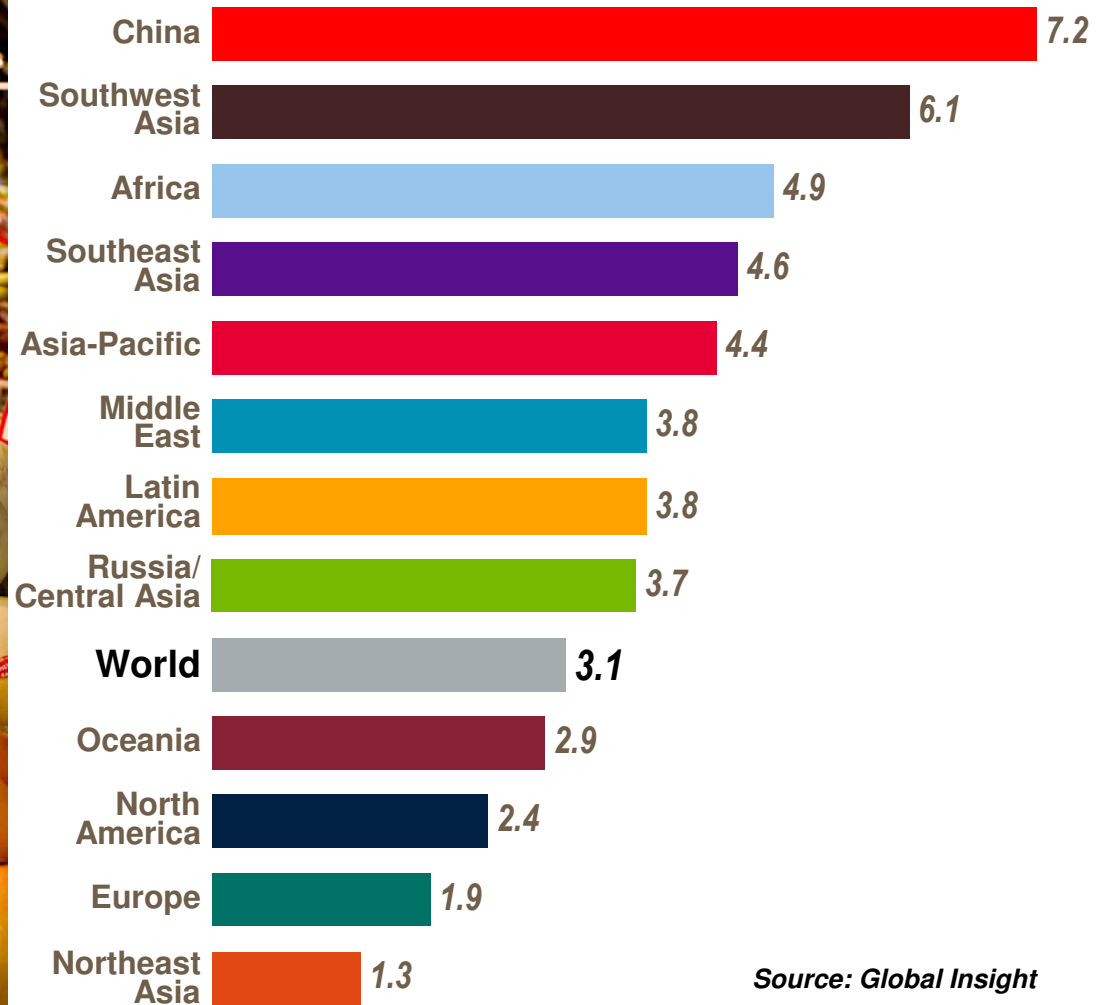
COPYRIGHT © 2010 THE BOEING COMPANY

China continues to lead the world in forecasted economic growth



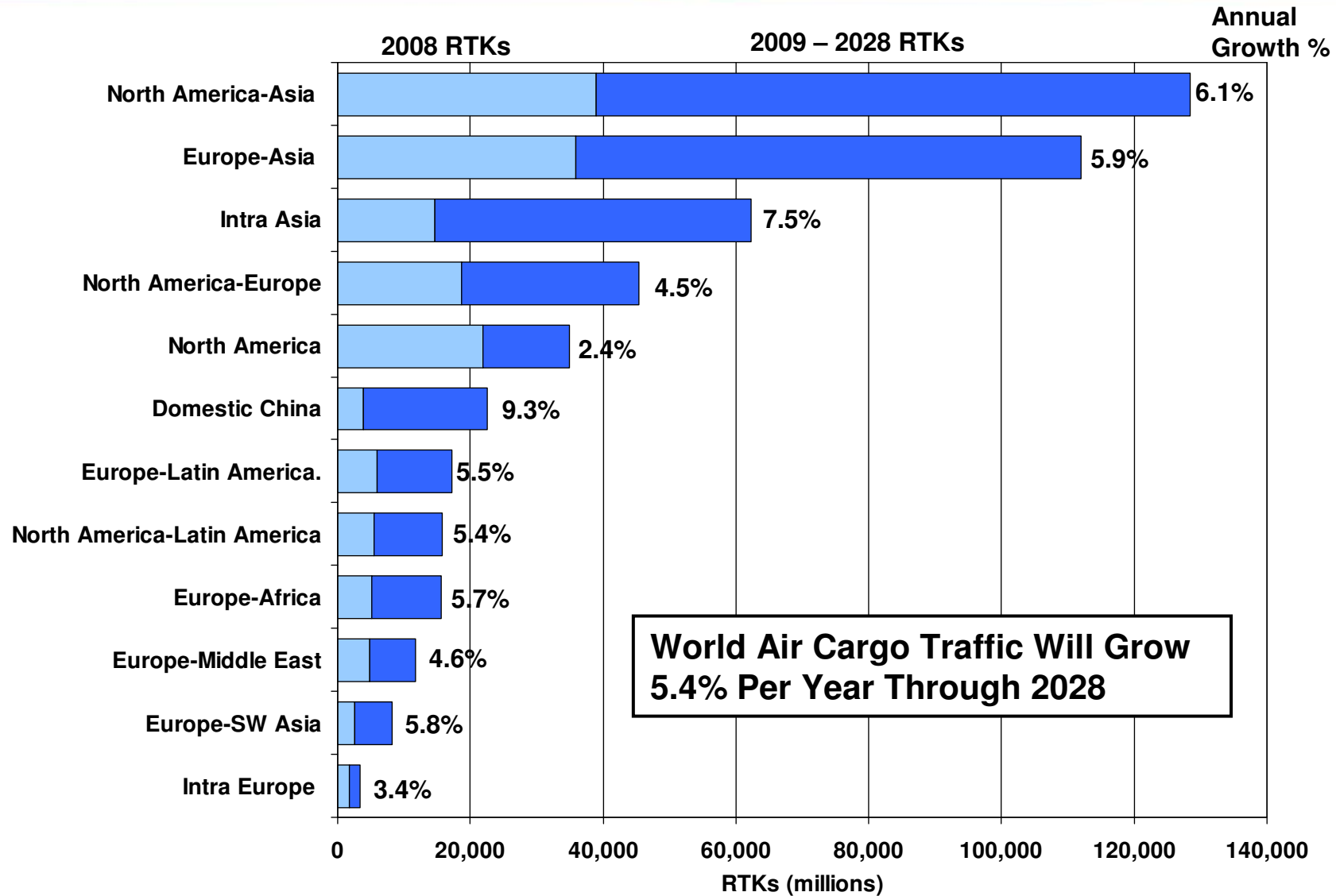
ANNUAL GDP GROWTH

2009 – 2028



Source: Global Insight

China air cargo market will continue to be of significant importance



China's Logistics Boost – Airports and Hubs on the Upswing Panelist



- **Mr. Robert Song**, Executive Vice President, AirBridgeCargo Airlines
- **Mr. Jason Teo**, Infineon Technologies and Chairman of the Transported Asset Protection Association Asia (TAPA)
- **Mr. Gao Pei**, Executive Deputy General Manager, China Cargo Airlines
- **Mr. Enno Osinga**, Senior Vice-President Cargo, Amsterdam Airport Schiphol, Schiphol